

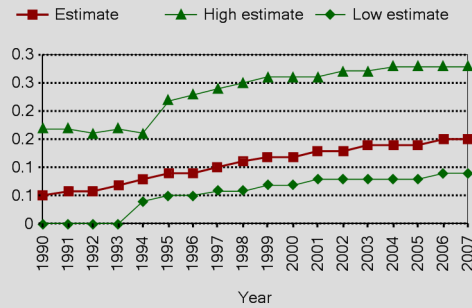
AUSTRALIA

Epidemiological Country Profile on HIV and AIDS



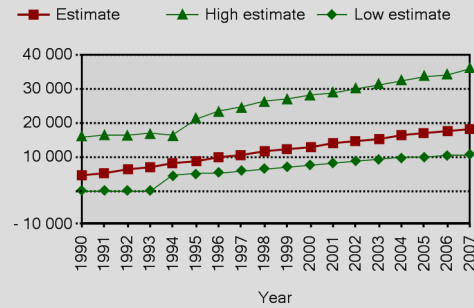
Epidemic estimates

Estimated adult HIV (15-49) prevalence %



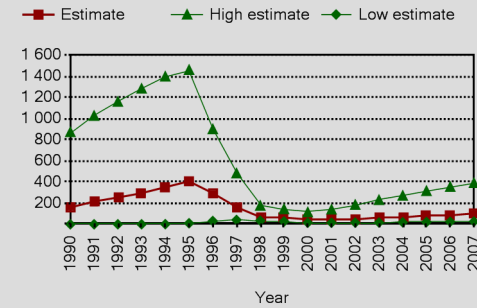
Source: UNAIDS/WHO, 2008

Number of people living with HIV

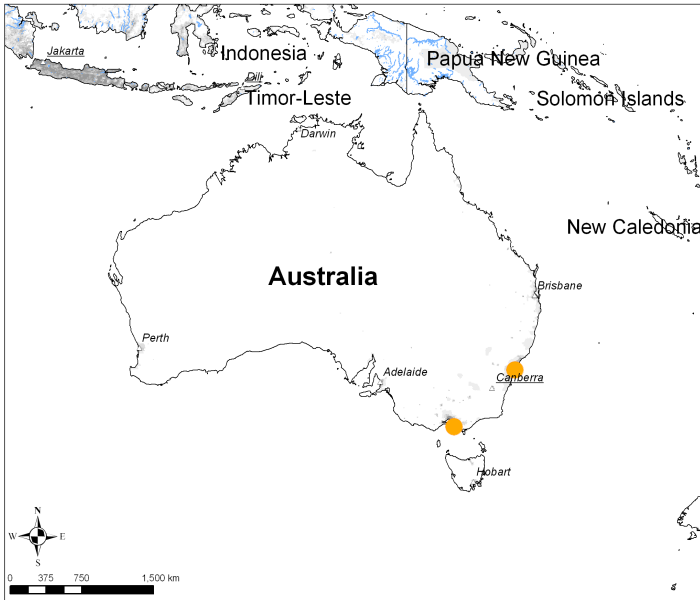


Source: UNAIDS/WHO, 2008

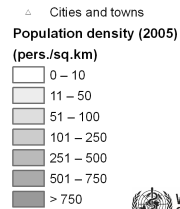
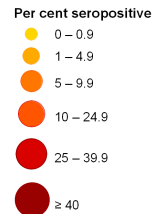
Annual number of AIDS deaths



Source: UNAIDS/WHO, 2008



HIV prevalence among men having sex with men, 2002-2006



The boundaries and names shown and the designations used on this map do not imply the expression of any opinion whatsoever on the part of the World Health Organization concerning the legal status of any country, territory, city or area or of its authorities, or concerning the delimitation of its frontiers or boundaries. Dotted lines on maps represent approximate border lines for which there may not yet be full agreement. © WHO 2008. All rights reserved.

Data source: UNAIDS, WHO, CIESIN/FAO/CIAT, DCW, USCB
Map production: Public Health Information and Geographic Information Systems (GIS)
World Health Organization



Coverage estimates (%)

Source:

Source: UNAIDS/WHO, 2008

Trends in behaviours

Source:

Source:

Urban and rural adult (15-49) HIV prevalence (%)

Year	Urban	Rural

Source: See sources above in map.